



Economic Overview

Fremont County, Colorado



Demographic Profile..... 3

Employment Trends 5

Unemployment Rate 5

Wage Trends..... 5

Cost of Living Index..... 7

Industry Snapshot..... 8

Occupation Snapshot 10

Industry Clusters..... 12

Education Levels..... 13

Gross Domestic Product..... 14

Fremont County, Colorado Regional Map..... 15

FAQ..... 16

Demographic Profile

The population in Fremont County, Colorado was 47,002 per American Community Survey data for 2014-2018.

The region has a civilian labor force of 15,101 with a participation rate of 37.6%. Of individuals 25 to 64 in Fremont County, Colorado, 16.6% have a bachelor's degree or higher which compares with 32.9% in the nation.

The median household income in Fremont County, Colorado is \$46,296 and the median house value is \$163,300.

Summary¹

	Percent			Value		
	Fremont County, Colorado	Colorado	USA	Fremont County, Colorado	Colorado	USA
Demographics						
Population (ACS)	—	—	—	47,002	5,531,141	322,903,030
Male	58.1%	50.3%	49.2%	27,324	2,780,831	158,984,190
Female	41.9%	49.7%	50.8%	19,678	2,750,310	163,918,840
Median Age ²	—	—	—	44.9	36.6	37.9
Under 18 Years	16.5%	22.8%	22.8%	7,757	1,259,819	73,553,240
18 to 24 Years	6.1%	9.5%	9.6%	2,871	522,730	30,903,719
25 to 34 Years	14.7%	15.4%	13.8%	6,931	849,157	44,567,976
35 to 44 Years	12.8%	13.5%	12.6%	6,013	749,277	40,763,210
45 to 54 Years	14.0%	12.9%	13.2%	6,603	715,354	42,589,573
55 to 64 Years	14.9%	12.6%	12.8%	7,020	694,166	41,286,731
65 to 74 Years	12.4%	8.2%	8.8%	5,807	455,831	28,535,419
75 Years, and Over	8.5%	5.1%	6.4%	4,000	284,807	20,703,162
Race: White	89.8%	84.2%	72.7%	42,213	4,655,584	234,904,818
Race: Black or African American	4.1%	4.1%	12.7%	1,935	227,938	40,916,113
Race: American Indian and Alaska Native	1.4%	1.0%	0.8%	665	54,483	2,699,073
Race: Asian	0.7%	3.1%	5.4%	326	172,695	17,574,550
Race: Native Hawaiian and Other Pacific Islander	0.0%	0.1%	0.2%	2	8,296	582,718
Race: Some Other Race	1.3%	3.9%	4.9%	622	214,817	15,789,961
Race: Two or More Races	2.6%	3.6%	3.2%	1,239	197,328	10,435,797
Hispanic or Latino (of any race)	13.2%	21.4%	17.8%	6,186	1,184,794	57,517,935
Population Growth						
Population (Pop Estimates) ⁴	—	—	—	47,839	5,758,736	328,239,523
Population Annual Average Growth ⁴	0.2%	1.5%	0.7%	97	78,654	2,146,799
People per Square Mile	—	—	—	31.2	55.6	92.9
Economic						
Labor Force Participation Rate and Size (civilian population 16 years and over) ⁵	37.6%	68.1%	63.2%	15,101	2,978,700	162,248,196
Prime-Age Labor Force Participation Rate and Size (civilian population 25-54) ⁵	43.6%	84.4%	81.8%	8,494	1,936,056	104,136,254
Armed Forces Labor Force ⁵	0.1%	0.8%	0.4%	47	33,612	1,028,133
Veterans, Age 18-64 ⁵	10.3%	6.1%	4.7%	3,024	213,265	9,398,789
Veterans Labor Force Participation Rate and Size, Age 18-64 ⁵	51.5%	78.5%	76.3%	1,556	167,453	7,168,168
Median Household Income ^{2,5}	—	—	—	\$46,296	\$68,811	\$60,293
Per Capita Income ⁵	—	—	—	\$21,965	\$36,415	\$32,621
Mean Commute Time (minutes) ⁵	—	—	—	23.1	25.5	26.6
Commute via Public Transportation ⁵	0.2%	3.1%	5.0%	33	86,516	7,602,145
Educational Attainment, Age 25-64						
No High School Diploma	9.6%	8.3%	11.2%	2,540	250,952	18,885,967
High School Graduate	41.9%	20.7%	25.8%	11,142	622,010	43,699,272
Some College, No Degree	23.1%	21.2%	21.0%	6,142	637,528	35,525,113

Summary¹

	Percent			Value		
	Fremont County, Colorado	Colorado	USA	Fremont County, Colorado	Colorado	USA
Associate's Degree	8.8%	8.9%	9.1%	2,336	266,896	15,389,737
Bachelor's Degree	10.7%	26.4%	20.8%	2,831	794,725	35,261,652
Postgraduate Degree	5.9%	14.5%	12.1%	1,576	435,843	20,445,749
Housing						
Total Housing Units	—	—	—	19,715	2,352,202	136,384,292
Median House Value (of owner-occupied units) ²	—	—	—	\$163,300	\$313,600	\$204,900
Homeowner Vacancy	1.2%	1.2%	1.7%	153	16,072	1,304,850
Rental Vacancy	6.3%	4.9%	6.0%	286	38,412	2,822,053
Renter-Occupied Housing Units (% of Occupied Units)	25.0%	35.1%	36.2%	4,287	742,242	43,285,318
Occupied Housing Units with No Vehicle Available (% of Occupied Units) ⁵	5.5%	5.2%	8.7%	937	108,846	10,424,934
Social						
Poverty Level (of all people) ⁵	15.3%	10.9%	14.1%	5,547	590,504	44,257,979
Households Receiving Food Stamps/SNAP	14.4%	8.0%	12.2%	2,479	168,243	14,635,287
Enrolled in Grade 12 (% of total population)	0.9%	1.3%	1.4%	416	72,553	4,442,295
Disconnected Youth ^{3,5}	1.7%	2.7%	2.6%	27	7,602	438,452
Children in Single Parent Families (% of all children) ⁵	33.1%	27.9%	34.3%	2,363	336,728	23,973,249
Uninsured	7.1%	8.1%	9.4%	2,592	441,850	29,752,767
With a Disability, Age 18-64 ⁵	16.5%	8.7%	10.3%	3,240	300,316	20,240,504
With a Disability, Age 18-64, Labor Force Participation Rate and Size ⁵	32.9%	49.5%	41.6%	1,066	148,528	8,421,018
Foreign Born	2.9%	9.8%	13.5%	1,347	542,977	43,539,499
Speak English Less Than Very Well (population 5 yrs and over)	4.0%	5.9%	8.5%	1,816	306,745	25,647,781

Source: [JobsEQ®](#)

1. American Community Survey 2014-2018, unless noted otherwise

2. Median values for certain aggregate regions (such as MSAs) may be estimated as the weighted averages of the median values from the composing counties.

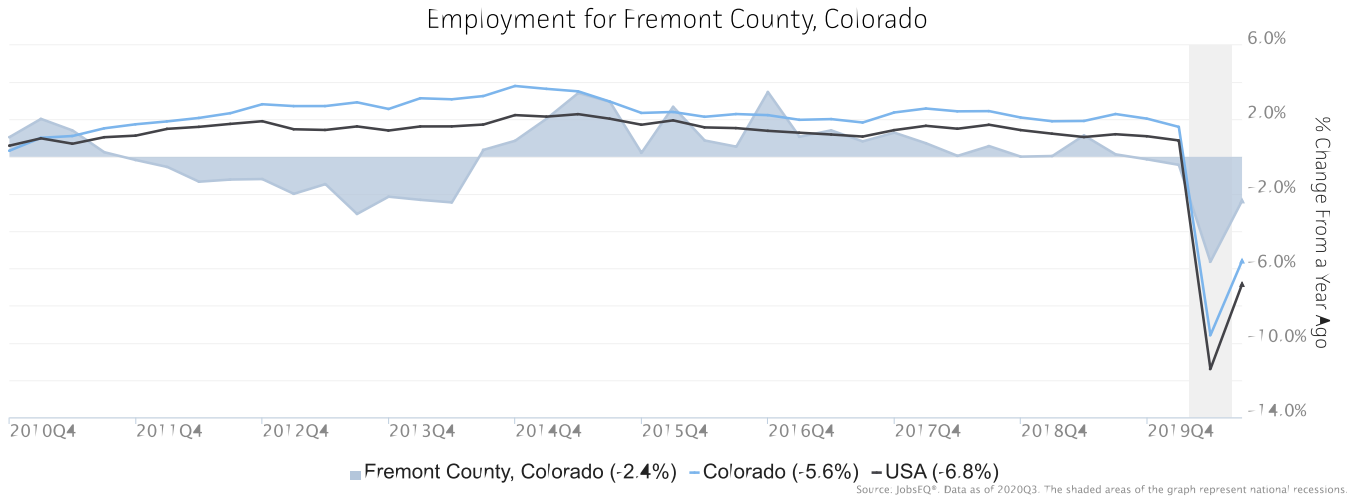
3. Disconnected Youth are 16-19 year olds who are (1) not in school, (2) not high school graduates, and (3) either unemployed or not in the labor force.

4. Census 2019, annual average growth rate since 2009

5. See Rio Arriba errata note in the Data Dictionary.

Employment Trends

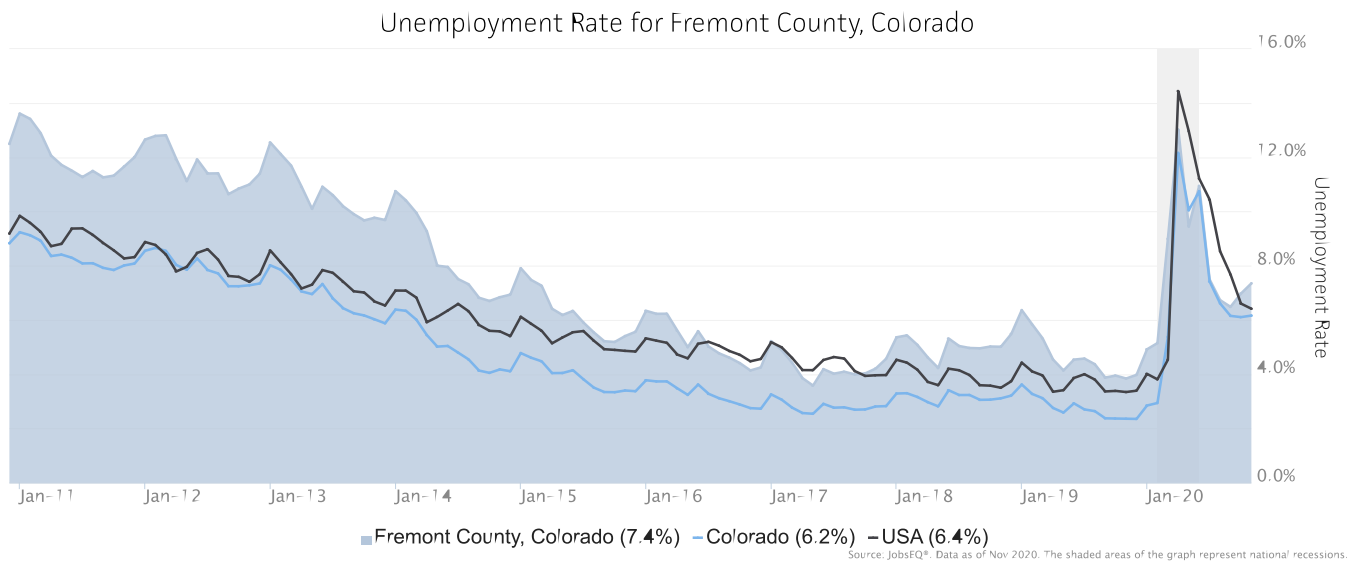
As of 2020Q3, total employment for Fremont County, Colorado was 14,955 (based on a four-quarter moving average). Over the year ending 2020Q3, employment declined 2.4% in the region.



Employment data are derived from the Quarterly Census of Employment and Wages, provided by the Bureau of Labor Statistics and imputed where necessary. Data are updated through 2020Q2 with preliminary estimates updated to 2020Q3.

Unemployment Rate

The unemployment rate for Fremont County, Colorado was 7.4% as of November 2020. The regional unemployment rate was higher than the national rate of 6.4%. One year earlier, in November 2019, the unemployment rate in Fremont County, Colorado was 3.8%.

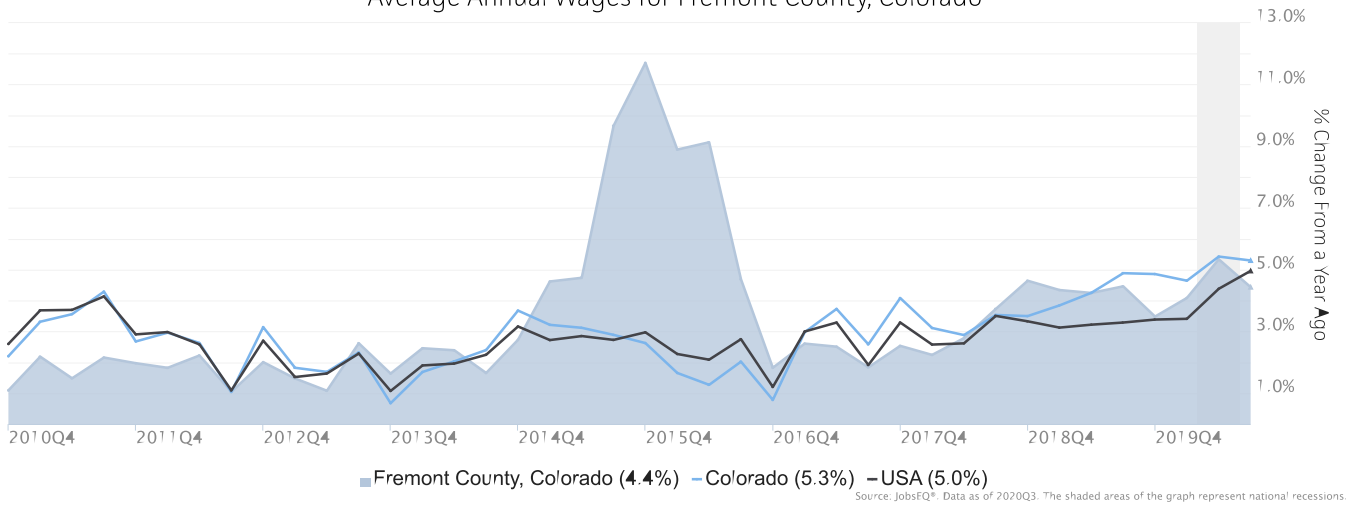


Unemployment rate data are from the Local Area Unemployment Statistics, provided by the Bureau of Labor Statistics and updated through November 2020.

Wage Trends

The average worker in Fremont County, Colorado earned annual wages of \$42,201 as of 2020Q3. Average annual wages per worker increased 4.4% in the region over the preceding four quarters. For comparison purposes, annual average wages were \$60,042 in the nation as of 2020Q3.

Average Annual Wages for Fremont County, Colorado



Annual average wages per worker data are derived from the Quarterly Census of Employment and Wages, provided by the Bureau of Labor Statistics and imputed where necessary. Data are updated through 2020Q2 with preliminary estimates updated to 2020Q3.

Cost of Living Index

The Cost of Living Index estimates the relative price levels for consumer goods and services. When applied to wages and salaries, the result is a measure of relative purchasing power. The cost of living is 5.0% lower in Fremont County, Colorado than the U.S. average.

Cost of Living Information

	Annual Average Salary	Cost of Living Index	
		(Base US)	US Purchasing Power
Fremont County, Colorado	\$42,201	95.0	\$44,445
Colorado	\$62,614	108.2	\$57,885
USA	\$60,042	100.0	\$60,042

Source: [JobsEQ®](#)

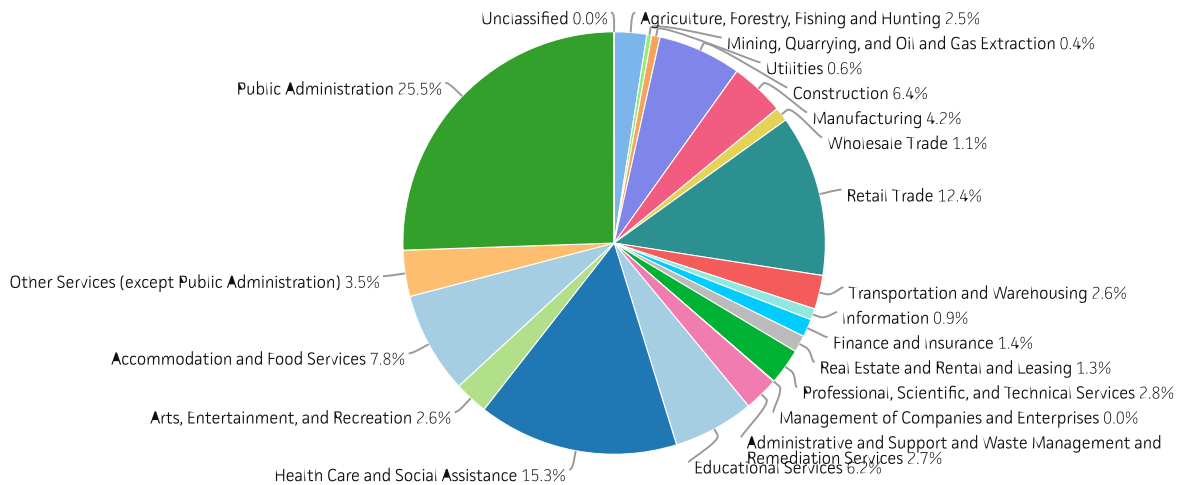
Data as of 2020Q3

Cost of Living per C2ER, data as of 2020q1, imputed by Chmura where necessary.

Industry Snapshot

The largest sector in Fremont County, Colorado is Public Administration, employing 3,817 workers. The next-largest sectors in the region are Health Care and Social Assistance (2,294 workers) and Retail Trade (1,851). High location quotients (LQs) indicate sectors in which a region has high concentrations of employment compared to the national average. The sectors with the largest LQs in the region are Public Administration (LQ = 5.21), Agriculture, Forestry, Fishing and Hunting (1.82), and Arts, Entertainment, and Recreation (1.50).

Total Workers for Fremont County, Colorado by industry



Source: JobsEQ®, Data as of 2020Q3

Employment data are derived from the Quarterly Census of Employment and Wages, provided by the Bureau of Labor Statistics and imputed where necessary. Data are updated through 2020Q2 with preliminary estimates updated to 2020Q3.

Sectors in Fremont County, Colorado with the highest average wages per worker are Management of Companies and Enterprises (\$104,412), Mining, Quarrying, and Oil and Gas Extraction (\$76,548), and Finance and Insurance (\$67,882). Regional sectors with the best job growth (or most moderate job losses) over the last 5 years are Retail Trade (+114 jobs), Administrative and Support and Waste Management and Remediation Services (+77), and Professional, Scientific, and Technical Services (+75).

Over the next 2 years, employment in Fremont County, Colorado is projected to expand by 2 jobs. The fastest growing sector in the region is expected to be Health Care and Social Assistance with a +1.2% year-over-year rate of growth. The strongest forecast by number of jobs over this period is expected for Health Care and Social Assistance (+56 jobs), Accommodation and Food Services (+10), and Arts, Entertainment, and Recreation (+7).

NAICS	Industry	Empl	Current	5-Year History			2-Year Forecast			Empl Growth	Ann % Growth
			Avg Ann Wages	LQ	Empl Change	Ann %	Total Demand	Exits	Transfers		
92	Public Administration	3,817	\$53,025	5.21	9	0.0%	668	295	402	-29	-0.4%
62	Health Care and Social Assistance	2,294	\$38,037	1.04	17	0.1%	492	214	222	56	1.2%
44	Retail Trade	1,851	\$27,263	1.21	114	1.3%	461	217	274	-29	-0.8%
72	Accommodation and Food Services	1,161	\$18,020	0.97	55	1.0%	386	166	210	10	0.4%
23	Construction	954	\$42,726	1.09	62	1.4%	187	67	120	0	0.0%
61	Educational Services	927	\$36,287	0.75	1	0.0%	177	83	89	5	0.3%
31	Manufacturing	622	\$59,008	0.50	10	0.3%	114	47	81	-14	-1.1%
81	Other Services (except Public Administration)	530	\$22,943	0.81	-22	-0.8%	121	55	66	1	0.0%
54	Professional, Scientific, and Technical Services	414	\$55,561	0.40	75	4.0%	75	26	45	4	0.5%
56	Administrative and Support and Waste Management and Remediation Services	398	\$29,596	0.42	77	4.4%	93	39	53	1	0.1%
71	Arts, Entertainment, and Recreation	388	\$23,858	1.50	-42	-2.0%	117	49	61	7	1.0%
48	Transportation and Warehousing	387	\$42,215	0.55	-7	-0.3%	84	35	47	1	0.1%
11	Agriculture, Forestry, Fishing and Hunting	372	\$9,764	1.82	-60	-2.9%	70	34	46	-9	-1.3%
52	Finance and Insurance	205	\$67,882	0.33	-34	-3.0%	37	14	24	-1	-0.3%
53	Real Estate and Rental and Leasing	192	\$35,418	0.73	-1	-0.1%	37	18	21	-1	-0.4%
42	Wholesale Trade	158	\$40,305	0.28	16	2.1%	31	12	21	-2	-0.7%
51	Information	129	\$37,977	0.44	-7	-1.1%	22	9	16	-2	-1.0%
22	Utilities	96	\$64,594	1.21	-8	-1.5%	17	6	11	0	-0.2%
21	Mining, Quarrying, and Oil and Gas Extraction	56	\$76,548	0.94	-29	-8.1%	12	4	8	0	0.2%
55	Management of Companies and Enterprises	5	\$104,412	0.02	0	-1.9%	1	0	1	0	0.3%
99	Unclassified	1	\$48,129	0.06	1	n/a	0	0	0	0	0.0%
Total - All Industries		14,955	\$42,201	1.00	226	0.3%	3,259	1,392	1,864	2	0.0%

Source: [JobsEQ®](http://www.chmuraecon.com/jobseq)

Employment data are derived from the Quarterly Census of Employment and Wages, provided by the Bureau of Labor Statistics and imputed where necessary. Data are updated through 2020Q2 with preliminary estimates updated to 2020Q3. Forecast employment growth uses national projections adapted for regional growth patterns.

Occupation Snapshot

The largest major occupation group in Fremont County, Colorado is Office and Administrative Support Occupations, employing 1,568 workers. The next-largest occupation groups in the region are Sales and Related Occupations (1,419 workers) and Protective Service Occupations (1,212). High location quotients (LQs) indicate occupation groups in which a region has high concentrations of employment compared to the national average. The major groups with the largest LQs in the region are Protective Service Occupations (LQ = 3.72), Community and Social Service Occupations (2.19), and Life, Physical, and Social Science Occupations (1.68).

Occupation groups in Fremont County, Colorado with the highest average wages per worker are Management Occupations (\$84,100), Computer and Mathematical Occupations (\$80,800), and Architecture and Engineering Occupations (\$80,500). The unemployment rate in the region varied among the major groups from 2.2% among Protective Service Occupations to 17.3% among Personal Care and Service Occupations.

Over the next 2 years, the fastest growing occupation group in Fremont County, Colorado is expected to be Healthcare Support Occupations with a +1.8% year-over-year rate of growth. The strongest forecast by number of jobs over this period is expected for Healthcare Support Occupations (+28 jobs) and Food Preparation and Serving Related Occupations (+13). Over the same period, the highest separation demand (occupation demand due to retirements and workers moving from one occupation to another) is expected in Food Preparation and Serving Related Occupations (420 jobs) and Sales and Related Occupations (394).

Fremont County, Colorado, 2020Q3¹

SOC	Occupation	Empl	Mean Ann Wages ²	Current			5-Year History			2-Year Forecast				
				LQ	Unempl	Unempl Rate	Online Job Ads ³	Empl Change	Ann %	Total Demand	Exits	Transfers	Empl Growth	Ann % Growth
43-0000	Office and Administrative Support	1,568	\$36,500	0.82	96	5.7%	46	-47	-0.6%	320	147	197	-24	-0.8%
41-0000	Sales and Related	1,419	\$35,200	0.98	124	8.1%	75	36	0.5%	372	158	236	-22	-0.8%
33-0000	Protective Service	1,212	\$50,000	3.72	26	2.2%	12	-54	-0.9%	201	93	122	-14	-0.6%
35-0000	Food Preparation and Serving Related	1,202	\$25,300	1.03	211	14.2%	86	13	0.2%	432	170	250	13	0.5%
11-0000	Management	979	\$84,100	0.99	26	3.0%	34	-9	-0.2%	160	68	99	-7	-0.4%
13-0000	Business and Financial Operations	948	\$64,900	1.13	30	3.9%	24	36	0.8%	179	53	126	0	0.0%
53-0000	Transportation and Material Moving	886	\$35,000	0.71	113	8.7%	50	33	0.8%	219	85	136	-1	-0.1%
47-0000	Construction and Extraction	837	\$44,300	1.20	141	9.9%	8	48	1.2%	185	55	130	1	0.0%
29-0000	Healthcare Practitioners and Technical	822	\$69,400	0.94	20	2.6%	128	-3	-0.1%	102	44	51	7	0.4%
25-0000	Educational Instruction and Library	789	\$39,400	0.93	53	6.5%	10	2	0.0%	150	66	78	5	0.3%
31-0000	Healthcare Support	751	\$29,700	1.13	42	5.3%	39	78	2.2%	227	97	102	28	1.8%
21-0000	Community and Social Service	575	\$47,400	2.19	14	2.7%	36	24	0.8%	136	40	84	12	1.0%
49-0000	Installation, Maintenance, and Repair	511	\$43,200	0.89	46	5.5%	46	12	0.5%	98	32	67	-1	-0.1%
37-0000	Building and Grounds Cleaning and Maintenance	487	\$30,400	0.98	48	8.3%	18	51	2.2%	134	54	76	5	0.5%
51-0000	Production	435	\$38,000	0.50	64	7.7%	12	-30	-1.3%	87	33	63	-8	-0.9%
39-0000	Personal Care and Service	402	\$31,600	1.02	81	17.3%	6	-19	-0.9%	139	58	74	6	0.7%
15-0000	Computer and Mathematical	273	\$80,800	0.59	7	3.8%	16	35	2.8%	43	9	32	2	0.4%
19-0000	Life, Physical, and Social Science	226	\$64,700	1.68	4	3.7%	9	6	0.5%	42	9	34	-1	-0.1%

Fremont County, Colorado, 2020Q3¹

SOC	Occupation	Empl	Mean Ann Wages ²	Current			5-Year History			Total Demand	2-Year Forecast			
				LQ	Unempl	Unempl Rate	Online Job Ads ³	Empl Change	Ann %		Exits	Transfers	Empl Growth	Ann % Growth
27-0000	Arts, Design, Entertainment, Sports, and Media	211	\$40,200	0.79	11	10.9%	13	6	0.6%	46	17	30	-1	-0.2%
17-0000	Architecture and Engineering	194	\$80,500	0.75	5	4.2%	8	14	1.5%	29	9	21	-1	-0.3%
23-0000	Legal	180	\$78,200	1.42	3	2.3%	n/a	2	0.2%	21	9	13	0	-0.1%
45-0000	Farming, Fishing, and Forestry	50	\$35,100	0.50	5	13.3%	0	-8	-2.9%	15	4	12	-1	-0.7%
Total - All Occupations		14,955	\$46,200	1.00	1,168	7.1%	678	226	0.3%	3,341	1,309	2,031	2	0.0%

Source: [JobsEQ®](#)

Data as of 2020Q3 unless noted otherwise

Note: Figures may not sum due to rounding.

1. Data based on a four-quarter moving average unless noted otherwise.

2. Wage data are as of 2019 and represent the average for all Covered Employment

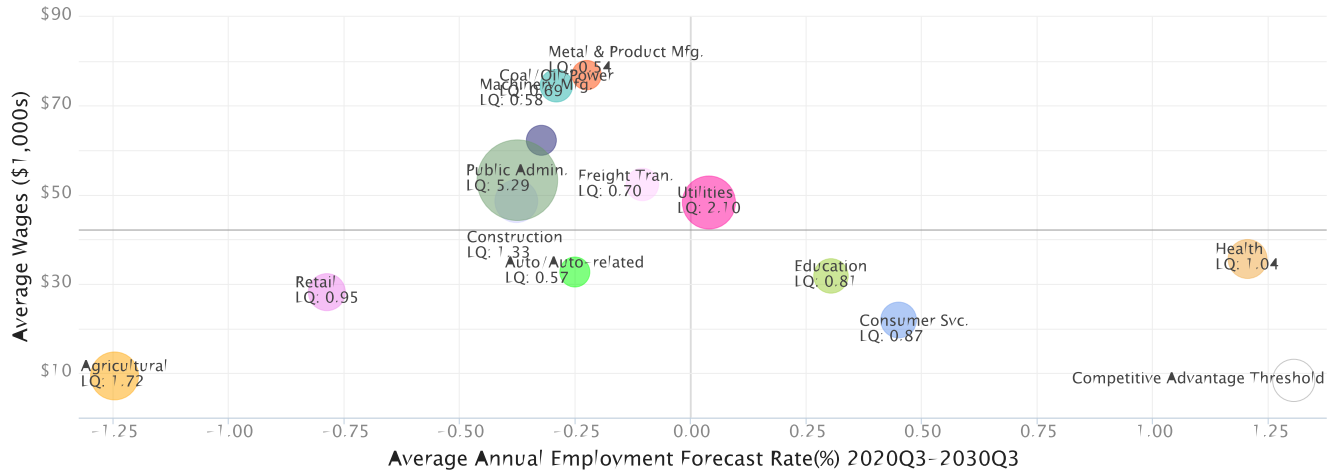
3. Data represent found online ads active within the last thirty days in the selected region; data represents a sampling rather than the complete universe of postings. Ads lacking zip code information but designating a place (city, town, etc.) may be assigned to the zip code with greatest employment in that place for queries in this analytic. Due to alternative county-assignment algorithms, ad counts in this analytic may not match that shown in RTI (nor in the popup window ad list).

Occupation employment data are estimated via industry employment data and the estimated industry/occupation mix. Industry employment data are derived from the Quarterly Census of Employment and Wages, provided by the Bureau of Labor Statistics and currently updated through 2020Q2, imputed where necessary with preliminary estimates updated to 2020Q3. Wages by occupation are as of 2019 provided by the BLS and imputed where necessary. Forecast employment growth uses national projections from the Bureau of Labor Statistics adapted for regional growth patterns.

Industry Clusters

A cluster is a geographic concentration of interrelated industries or occupations. The industry cluster in Fremont County, Colorado with the highest relative concentration is Public Admin. with a location quotient of 5.29. This cluster employs 3,817 workers in the region with an average wage of \$53,311. Employment in the Public Admin. cluster is projected to contract in the region about 0.4% per year over the next ten years.

Industry Clusters for Fremont County, Colorado as of 2020Q3



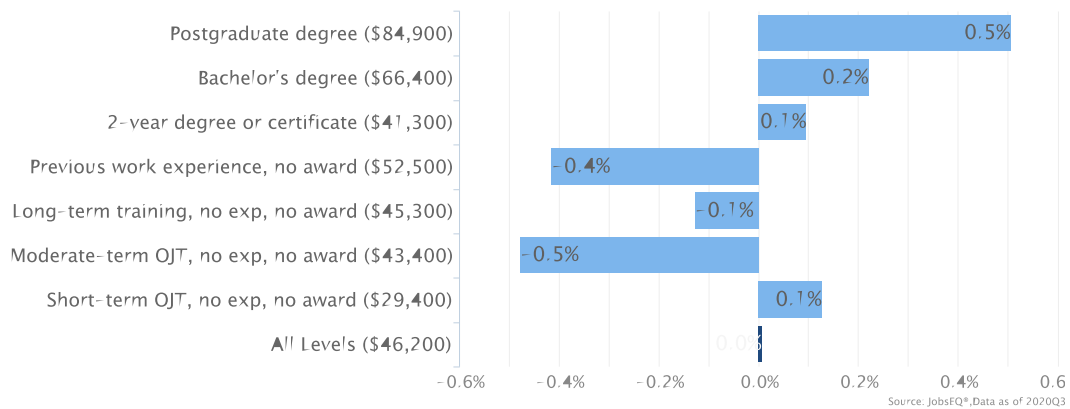
Source: JobsEQ®, Data as of 2020Q3

Location quotient and average wage data are derived from the Quarterly Census of Employment and Wages, provided by the Bureau of Labor Statistics, imputed where necessary, and updated through 2020Q2 with preliminary estimates updated to 2020Q3. Forecast employment growth uses national projections from the Bureau of Labor Statistics adapted for regional growth patterns.

Education Levels

Expected growth rates for occupations vary by the education and training required. While all employment in Fremont County, Colorado is projected to grow 0.0% over the next ten years, occupations typically requiring a postgraduate degree are expected to grow 0.5% per year, those requiring a bachelor’s degree are forecast to grow 0.2% per year, and occupations typically needing a 2-year degree or certificate are expected to grow 0.1% per year.

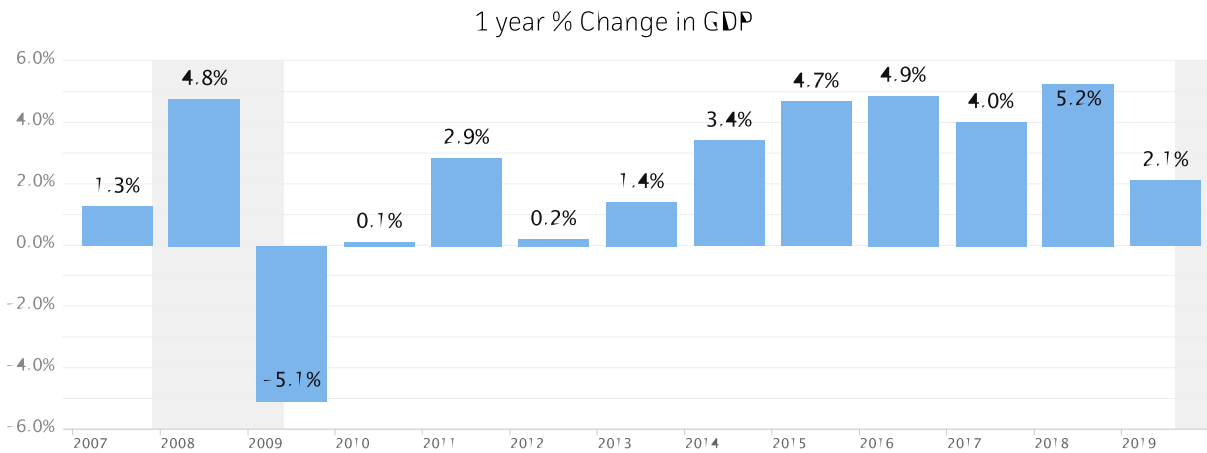
Annual Average Projected Job Growth by Training Required for Fremont County, Colorado



Employment by occupation data are estimates as of 2020Q3. Education levels of occupations are based on BLS assignments. Forecast employment growth uses national projections from the Bureau of Labor Statistics adapted for regional growth patterns.

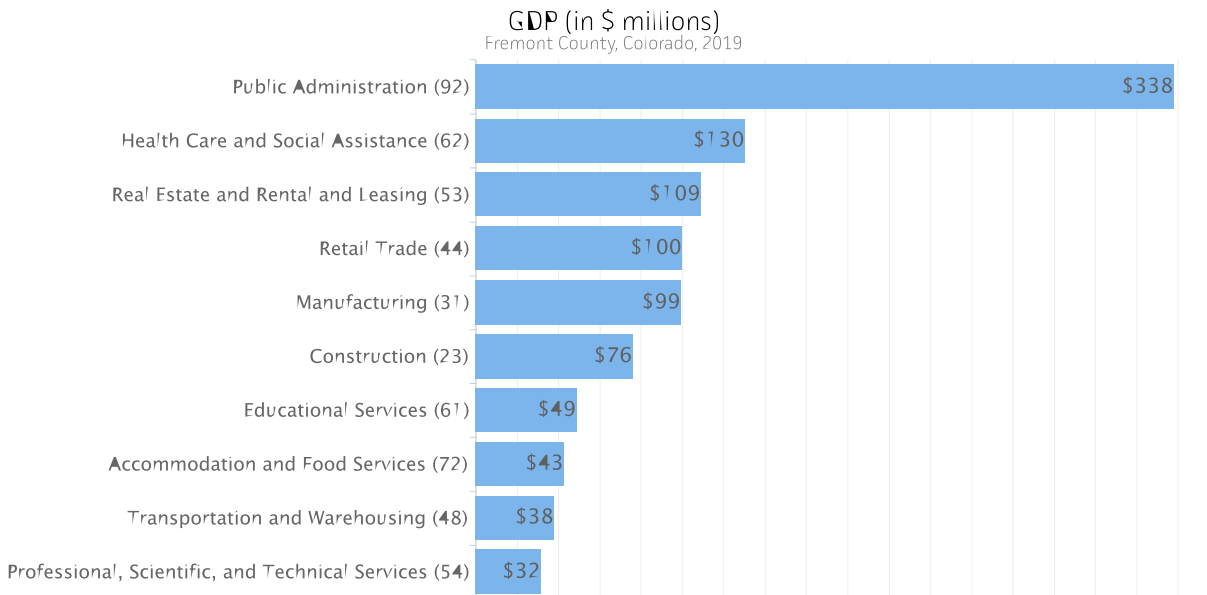
Gross Domestic Product

Gross Domestic Product (GDP) is the total value of goods and services produced by a region. In 2019, nominal GDP in Fremont County, Colorado expanded 2.1%. This follows growth of 5.2% in 2018. As of 2019, total GDP in Fremont County, Colorado was \$1,201,393,000.



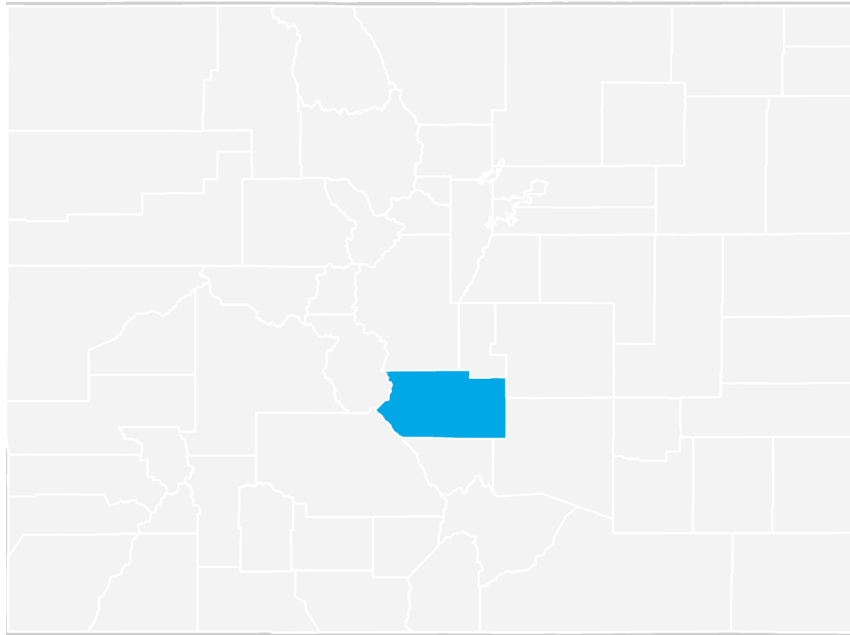
Gross Domestic Product data are provided by the Bureau of Economic Analysis, imputed by Chmura where necessary, updated through 2019.

Of the sectors in Fremont County, Colorado, Public Administration contributed the largest portion of GDP in 2019, \$337,843,000. The next-largest contributions came from Health Care and Social Assistance (\$130,178,000); Real Estate and Rental and Leasing (\$108,880,000); and Retail Trade (\$99,780,000).



Gross Domestic Product data are provided by the Bureau of Economic Analysis, imputed by Chmura where necessary, updated through 2019.

Fremont County, Colorado Regional Map



FAQ

What is a location quotient?

A location quotient (LQ) is a measurement of concentration in comparison to the nation. An LQ of 1.00 indicates a region has the same concentration of an industry (or occupation) as the nation. An LQ of 2.00 would mean the region has twice the expected employment compared to the nation and an LQ of 0.50 would mean the region has half the expected employment in comparison to the nation.

What is separation demand?

Separation demand is the number of jobs required due to separations—labor force exits (including retirements) and turnover resulting from workers moving from one occupation into another. Note that separation demand does not include all turnover—it does not include when workers stay in the same occupation but switch employers. The total projected demand for an occupation is the sum of the separation demand and the growth demand (which is the increase or decrease of jobs in an occupation expected due to expansion or contraction of the overall number of jobs in that occupation).

What is a cluster?

A cluster is a geographic concentration of interrelated industries or occupations. If a regional cluster has a location quotient of 1.25 or greater, the region is considered to possess a competitive advantage in that cluster.

What is the difference between industry wages and occupation wages?

Industry wages and occupation wages are estimated via separate data sets, often the time periods being reported do not align, and wages are defined slightly differently in the two systems (for example, certain bonuses are included in the industry wages but not the occupation wages). It is therefore common that estimates of the average industry wages and average occupation wages in a region do not match exactly.

What is NAICS?

The North American Industry Classification System (NAICS) is used to classify business establishments according to the type of economic activity. The NAICS Code comprises six levels, from the “all industry” level to the 6-digit level. The first two digits define the top level category, known as the “sector,” which is the level examined in this report.

What is SOC?

The Standard Occupational Classification system (SOC) is used to classify workers into occupational categories. All workers are classified into one of over 804 occupations according to their occupational definition. To facilitate classification, occupations are combined to form 22 major groups, 95 minor groups, and 452 occupation groups. Each occupation group includes detailed occupations requiring similar job duties, skills, education, or experience.

About This Report

This report and all data herein were produced by JobsEQ®, a product of Chmura Economics & Analytics. The information contained herein was obtained from sources we believe to be reliable. However, we cannot guarantee its accuracy and completeness.